

Product datasheet

Kingsway  
Group

## Visilux Vision Panel 405 x 405mm



Picture Panel

### Page 1 of 2

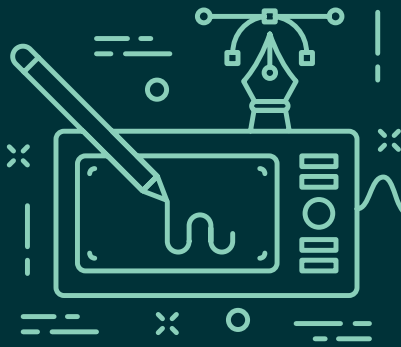
The Visilux Vision Panel is the original high quality, versatile vision panel that combines toughened glass and top quality stainless steel components to compliment any healthcare environment.

### Installation description

- Mark out the specified area on the door (ie, 410 x 410mm if a standard square unit has been purchased) and cut out accurately.
- Fix the timber bead to one side of the aperture either with screws or pins.
- Line the aperture with the intumescent liner provided.
- Place the vision panel in the aperture making sure you have the panel round the correct way (ie, that the staff key side of the panel is on the staff side of the door).
- Fix the other timber bead in place and if pins have been used make good the pin holes with matching hard wax.

#### Anti-ligature Disclaimer

Anti-ligature Disclaimer The anti-ligature design characteristics of this product are not intended to replace or substitute the need for necessary supervision of those who may be at risk, or for other necessary protective measures to be taken in the specific circumstances of usage. Kingsway Group, Inc. does not offer any products for sale as being 'ligature-free' and will not be liable for any claims arising from ligature attachment on its products. It is the customer's responsibility to ensure that products purchased and installed are suitable for the environments they are installed in.



Product datasheet

Kingsway  
Group

## Visilux Vision Panel 405 x 405mm

### Variations

The Visilux vision panel is available in the following formats:

- V4401 Visilux vision panel 405 x 405mm with key & anti ligature thumb turn
- V4402 Visilux vision panel 405 x 405mm with key control to both sides
- V4403 Visilux vision panel 405 x 405mm with key only control
- V4404 Visilux vision panel 405 x 405mm with anti lig thumb turn control to both sides
- V4405 Visilux vision panel 405 x 405mm with anti ligature thumb turn only
- VEB444 Visilux Easy Bead set for 44mm door, 405 x 405mm
- VEB454 Visilux Easy Bead set for 54mm door, 405 x 405mm

### Glazing Specification & Fire Ratings

Standard units as shown above have 6mm Trident toughened fire rated glass to both outer faces, these are suitable for FD30 doors. Where additional fire resistance is required, the glazing specification changes to 19mm and 10mm Trident toughened fire rated glass making them suitable for FD60 doors.

### Design Options

Ultra 20mm stripe – add 'U' to the end of the product code  
Picture panel add 'P' to the end of the code  
Soft Close add 'SC' to the end of the code

#### Anti-ligature Disclaimer

Anti-ligature Disclaimer The anti-ligature design characteristics of this product are not intended to replace or substitute the need for necessary supervision of those who may be at risk, or for other necessary protective measures to be taken in the specific circumstances of usage. Kingsway Group, Inc. does not offer any products for sale as being 'ligature-free' and will not be liable for any claims arising from ligature attachment on its products. It is the customer's responsibility to ensure that products purchased and installed are suitable for the environments they are installed in.

Page 2 of 2

## Operation and Maintenance

### Operation

The panel can be operated either by the staff control (square key) or by patient control (thumb turn or lever). This is done by turning the control 90° clockwise which lifts the central panel to allow vision through the door.

### Maintenance

Periodic checks should be made that the unit is functioning correctly and that no damage has been done. Visual checks should also be made to the timber bead to ensure that it is fully intact and is holding the panel in place. Where screws have been used in the timber bead, these should be checked to ensure that they remain tight and pin head holes should be checked to ensure they have been filled with the hard wax filler.

### Cleaning

Cleaning of Visilux units should be done with caution and only a damp cloth should be necessary. Avoid the use of excess water or aggressive cleaning agents. The timber beads should only be wiped with a damp cloth to ensure they do not become water damaged.

## Guarantee

### 5 Year Guarantee\*

\*For faulty manufacture and not for damage.

## NBS Specification

### Typical description would read:

Visilux V4400 Vision Panel with Key and Knob Turn Control.