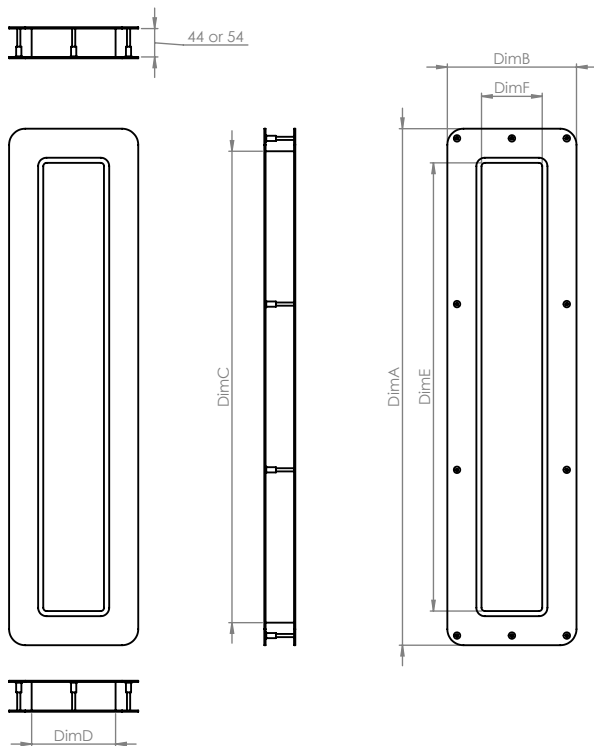


Pyrolux Vision Panels



Pyrolux vision panels have been designed for use in secure healthcare environments and combines two layers of Trident 19mm high strength glazing with bolt fixed stainless steel fascia's. These highly robust glazed panels are available in 5 different sizes.

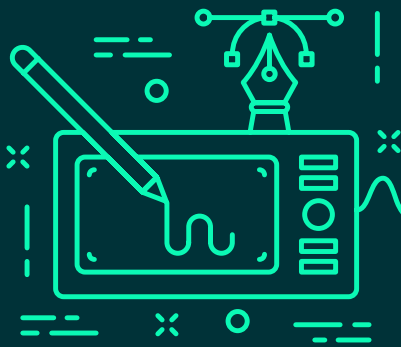
Installation Description

- Using the template mark the cut out area on the door including the 12 bolt holes.
- Cut out the marked area and drill the 12 holes.
- Line the opening with the intumescent liner and place the vision panel carefully in the opening.
- Place the stud side fascia on to the door making sure each weld stud is located in a drilled hole (this is the patient side fascia).
- Position the other fascia on the door so that the countersunk holes line up with the drilled holes on the door and start attaching both fascia's together with the bolt provided.
- Final tightening of the bolts – take care not to over tighten as this will result in the screws shearing.

Part Number	Door Thickness	DimA	DimB	DimC	DimD	DimE	DimF
P5020	44	500	200	430	130	394	94
P5025	54	500	200	430	130	394	94
P5050	44	500	500	430	430	394	394
P5055	54	500	500	430	430	394	394
P8020	44	800	200	730	130	694	94
P8025	54	800	200	730	130	694	94
P8050	44	800	500	730	430	694	394
P8055	54	800	500	730	430	694	394
P1300	44	1300	320	1230	250	1194	214
P1305	54	1300	320	1320	250	1194	214

Anti-ligature Disclaimer

Anti-ligature Disclaimer The anti-ligature design characteristics of this product are not intended to replace or substitute the need for necessary supervision of those who may be at risk, or for other necessary protective measures to be taken in the specific circumstances of usage. Kingsway Group, Inc. does not offer any products for sale as being 'ligature-free' and will not be liable for any claims arising from ligature attachment on its products. It is the customer's responsibility to ensure that products purchased and installed are suitable for the environments they are installed in.



Product datasheet

Kingsway Group

Pyrolux Vision Panels

Variations

The Pyrolux vision panel is available in the following formats:

P5020	Pyrolux clear glass vision panel 500 x 200mm 44mm door	Stainless Steel Bead
P5025	Pyrolux clear glass vision panel 500 x 200mm 54mm door	Stainless Steel Bead
P5050	Pyrolux clear glass vision panel 500 x 500mm 44mm door	Stainless Steel Bead
P5055	Pyrolux clear glass vision panel 500 x 500mm 54mm door	Stainless Steel Bead
P8020	Pyrolux clear glass vision panel 800 x 200mm 44mm door	Stainless Steel Bead
P8025	Pyrolux clear glass vision panel 800 x 200mm 54mm door	Stainless Steel Bead
P8050	Pyrolux clear glass vision panel 800 x 500mm 44mm door	Stainless Steel Bead
P8055	Pyrolux clear glass vision panel 800 x 500mm 54mm door	Stainless Steel Bead
P1300	Pyrolux clear glass vision panel 1370 x 320mm 44mm door	Stainless Steel Bead
P1305	Pyrolux clear glass vision panel 1370 x 320mm 54mm door	Stainless Steel Bead
P5020TB	Pyrolux clear glass vision panel 500 x 200mm 44mm door	Timber Bead
P5025TB	Pyrolux clear glass vision panel 500 x 200mm 54mm door	Timber Bead
P5050TB	Pyrolux clear glass vision panel 500 x 500mm 44mm door	Timber Bead
P8055TB	Pyrolux clear glass vision panel 500 x 500mm 54mm door	Timber Bead
P8020TB	Pyrolux clear glass vision panel 800 x 200mm 44mm door	Timber Bead
P8025TB	Pyrolux clear glass vision panel 800 x 200mm 54mm door	Timber Bead
P8050TB	Pyrolux clear glass vision panel 800 x 500mm 44mm door	Timber Bead
P8055TB	Pyrolux clear glass vision panel 800 x 500mm 54mm door	Timber Bead
P1300TB	Pyrolux clear glass vision panel 1370 x 320mm 44mm door	Timber Bead
P1305TB	Pyrolux clear glass vision panel 1370 x 320mm 54mm door	Timber Bead

Design Options

Wrapped fascia, wood effect add 'W' to the code, for powder coated add 'PC'

Anti-ligature Disclaimer

Anti-ligature Disclaimer The anti-ligature design characteristics of this product are not intended to replace or substitute the need for necessary supervision of those who may be at risk, or for other necessary protective measures to be taken in the specific circumstances of usage. Kingsway Group, Inc. does not offer any products for sale as being 'ligature-free' and will not be liable for any claims arising from ligature attachment on its products. It is the customer's responsibility to ensure that products purchased and installed are suitable for the environments they are installed in.

Operation and Maintenance

Operation

To allow vision through the panel the thumb turn or staff control is used to align the central pane so that the clear stripes line up. Where a hold open control is used the panel can be left in the open position.

Maintenance

Periodic checks should be made to the screws to ensure they are all tight and that they have not been tampered with. The control should be checked to ensure it is functioning smoothly and that the set screws that holds the thumb turn on is tight.

Cleaning

Cleaning of vision panels should be done with caution as they should not come in contact with liquids of any kind. Where cleaning is required it should be made with a damp cloth and a mild detergent if needed.

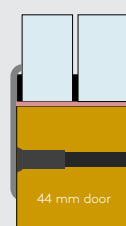
Guarantee

10 Year Guarantee*

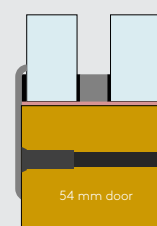
*For faulty manufacture and not for damage

Specification

Typical description would read:
P5020 Pyrolux Vision Panel 500 x 200mm
44mm Door



Trident 19mm Glass
2mm Intumescent spacers
2mm Intumescent liner
Bolt fixed stainless steel fascia
10 x 10mm stainless steel dividing spacer with 1mm intumescent



Trident 19mm Glass
2mm Intumescent spacers
2mm Intumescent liner
Bolt fixed stainless steel fascia
10 x 10mm Stainless steel spacing frame