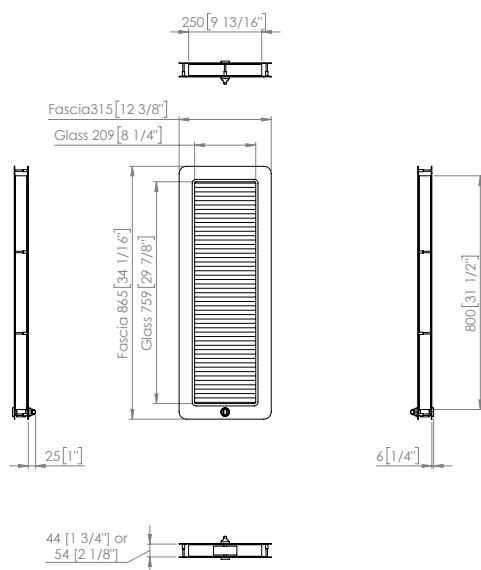


## Duralux Vision Panel 800 x 250mm



Picture Panel & Wrapped Fascia



### Anti-ligature Disclaimer

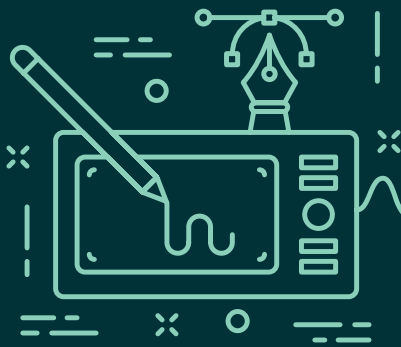
Anti-ligature Disclaimer The anti-ligature design characteristics of this product are not intended to replace or substitute the need for necessary supervision of those who may be at risk, or for other necessary protective measures to be taken in the specific circumstances of usage. Kingsway Group, Inc. does not offer any products for sale as being 'ligature-free' and will not be liable for any claims arising from ligature attachment on its products. It is the customer's responsibility to ensure that products purchased and installed are suitable for the environments they are installed in.

### Page 1 of 2

Duralux vision panels are the original high strength fit for purpose vision panel that has been designed specifically for challenging healthcare environments.

### Installation description

- Using the template mark out the cut out area on the door including the 12 bolt holes.
- Cut out the marked area and drill the 12 holes.
- Line the aperture with the intumescent liner and place the vision panel carefully in the aperture.
- Place the stud side fascia on to the door making sure each weld stud is locating in a drilled hole (this is the patient side fascia).
- Position the other fascia on the door so that the countersunk holes line up with the drilled holes on the door and start attaching both fascia's together with the bolt provided.
- Take care to ensure that the spindle of the thumb turn (if specified) is located centrally in the thumb turn hole on the patient side then start tightening the bolts.
- Fix the thumb turn on to the spindle with a 2.5mm hex bit making sure there is a minimal amount of movement backwards and forwards and that it is not binding on the edges of the thumb turn bezel.
- Final tightening of the bolts – take care not to over tighten as this will result in the screws shearing.



Product datasheet

Kingsway  
Group

## Duralux Vision Panel 800 x 250mm

### Variations

The Duralux vision panel is available in the following formats:

- |       |   |
|-------|---|
| D8400 | Duralux vision panel 800 x 250mm for a 44mm door with key & anti lig thumb turn control         |
| D8401 | Duralux vision panel 800 x 250mm for a 44mm door with key control to both sides                 |
| D8402 | Duralux vision panel 800 x 250mm for a 44mm door with anti lig thumb turn control to both sides |
| D8403 | Duralux vision panel 800 x 250mm for a 44mm door with key only control                          |
| D8404 | Duralux vision panel 800 x 250mm for a 44mm door with anti ligature thumb turn only             |
| D8500 | Duralux vision panel 800 x 250mm for a 54mm door with key & anti lig thumb turn control         |
| D8501 | Duralux vision panel 800 x 250mm for a 54mm door with key control to both sides                 |
| D8502 | Duralux vision panel 800 x 250mm for a 54mm door with anti lig thumb turn control to both sides |
| D8503 | Duralux vision panel 800 x 250mm for a 54mm door with key only control                          |
| D8504 | Duralux vision panel 800 x 250mm for a 54mm door with anti ligature thumb turn only             |

### Design Options

- Ultra 20mm stripe – add 'U' to the end of the product code
- Picture panel add 'P' to the end of the code
- Soft Close add 'SC' to the end of the code
- Security 150 micron film both sides add 'F' to the end of the code
- Wrapped fascia, wood effect add 'W' to the code, for powder coated add 'PC'

#### Anti-ligature Disclaimer

Anti-ligature Disclaimer The anti-ligature design characteristics of this product are not intended to replace or substitute the need for necessary supervision of those who may be at risk, or for other necessary protective measures to be taken in the specific circumstances of usage. Kingsway Group, Inc. does not offer any products for sale as being 'ligature-free' and will not be liable for any claims arising from ligature attachment on its products. It is the customer's responsibility to ensure that products purchased and installed are suitable for the environments they are installed in.

Page 2 of 2

## Operation and Maintenance

### Operation

To allow vision through the panel the thumb turn or staff control is used to align the central pane so that the clear stripes line up. Where a hold open control is used the panel can be left in the open position where.

### Maintenance

Periodic checks should be made to the fixings to ensure they are all tight and that they have not been tampered with. The control should be checked to ensure it is functioning smoothly and that the grub screw that holds the thumb turn on is tight.

### Cleaning

Cleaning of Duralux panels should be done with caution as they should not come in contact with liquids of any kind. Where cleaning is required it should be made with a damp cloth and a mild detergent if needed.

## Fire Ratings

44mm panels are suitable for FD30 doors.  
54mm panels are suitable for FD60 doors

## Guarantee

### Life Time Guarantee\*

\*For faulty manufacture and not for damage

## NBS Specification

Typical description would read:  
Duralux D8400 Vision Panel with key and thumb turn control