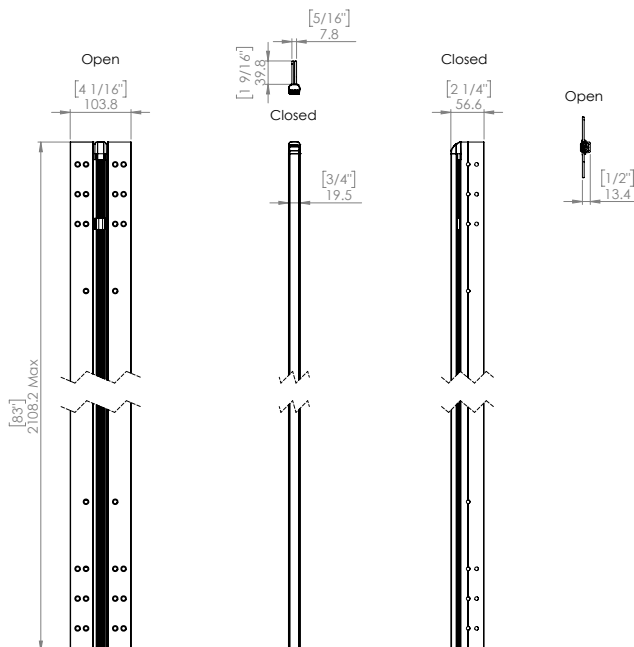
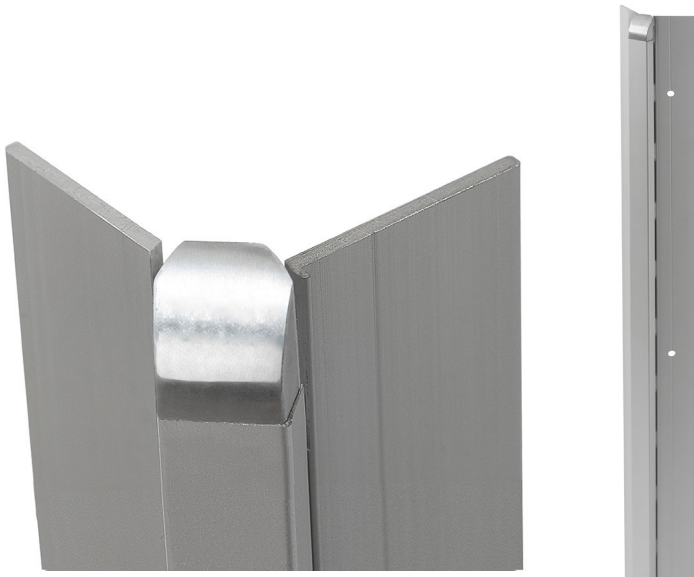


Product datasheet

Kingsway Group

KG200 Continuous Hinge.



Anti-ligature Disclaimer

Anti-ligature Disclaimer The anti-ligature design characteristics of this product are not intended to replace or substitute the need for necessary supervision of those who may be at risk, or for other necessary protective measures to be taken in the specific circumstances of usage. Kingsway Group, Inc. does not offer any products for sale as being 'ligature-free' and will not be liable for any claims arising from ligature attachment on its products. It is the customer's responsibility to ensure that products purchased and installed are suitable for the environments they are installed in.

The aluminium continuous geared hinge runs the full length of the door and provides maximum strength, security and safety. It is fitted with a specially formed metal cap to resist ligature attachment and it is supplied with security pin torx fixings.

Installation Description

- Attach Hinge to door with provided security screws.
- Attach the door and hinge to the frame paying attention to clearances at header and strike side.

Operation and Maintenance

Operation

The continuous hinge operates by an interlocking extruded cog mechanism that provides a high strength and smooth motion for doors with heavy usage.

Maintenance

The continuous hinge is largely maintenance free. Periodic checks should be made to ensure that the hinge or the fixings have not been tampered with.

Cleaning

Cleaning of the hinges should be with a damp cloth. Cleaning agents should be avoided.

Guarantee

5 Year Guarantee*

*For faulty manufacture and not for damage

Specification

KG200 Continuous Hinge.