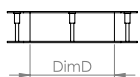
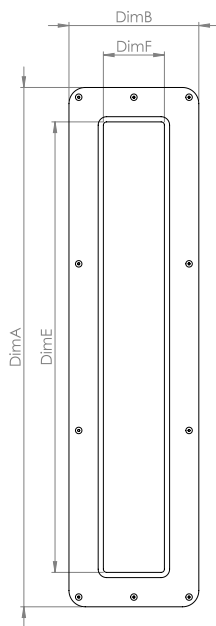
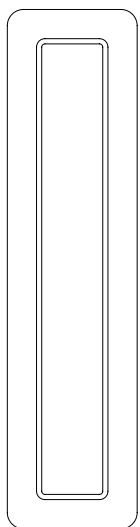
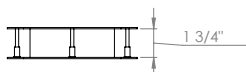


# Pyrolux Vision Panels



Pyrolux vision panels have been designed for use in secure healthcare environments and combines two layers of Trident 3/4" high strength glazing with bolt fixed stainless steel fascia's. These highly robust glazed panels are available in 5 different sizes.

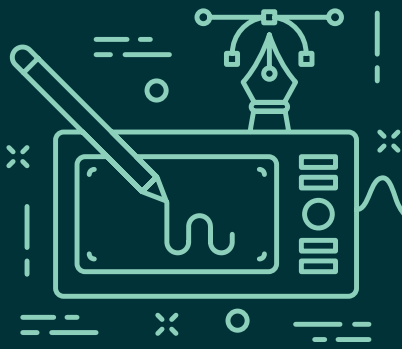
## Installation description

- Using the template mark out the cut out area on the door including the 12 bolt holes.
- Cut out the marked area and drill the 12 holes.
- Line the opening with the intumescent liner and place the vision panel carefully in the opening.
- Place the stud side fascia on to the door making sure each weld stud is located in a drilled hole (this is the patient side fascia).
- Position the other fascia on the door so that the countersunk holes line up with the drilled holes on the door and start attaching both fascia's together with the bolt provided.
- Final tightening of the bolts – take care not to over tighten as this will result in the screws shearing.

Part Number	Door Thickness	DimA	DimB	DimC	DimD	DimE	DimF
P5020	1 3/4"	20 1/4"	8 1/2"	17"	5 1/8"	16 1/8"	4 1/4"
P5050	1 3/4"	20 1/4"	20 1/4"	17"	17"	16 1/8"	16 1/8"
P8020	1 3/4"	32 1/8"	8 1/2"	28 3/4"	5 1/8"	28"	4 1/4"
P8050	1 3/4"	32 1/8"	20 1/4"	28 3/4"	17"	28"	16 1/8"
P1300	1 3/4"	54 1/2"	13 1/4"	51 1/4"	9 3/4"	50 1/4"	9"

### Anti-ligature Disclaimer

Anti-ligature Disclaimer The anti-ligature design characteristics of this product are not intended to replace or substitute the need for necessary supervision of those who may be at risk, or for other necessary protective measures to be taken in the specific circumstances of usage. Kingsway Group, Inc. does not offer any products for sale as being 'ligature-free' and will not be liable for any claims arising from ligature attachment on its products. It is the customer's responsibility to ensure that products purchased and installed are suitable for the environments they are installed in.



Product datasheet

Kingsway  
Group

## Pyrolux Vision Panels

### Size Options:

The Pyrolux vision panel is available in the following sizes:

P5020 Pyrolux vision panel 5" x 17" nominal size

P5050 Pyrolux vision panel 17" x 17" nominal size

P8020 Pyrolux vision panel 5" x 29" nominal size

P8050 Pyrolux vision panel 17" x 29" nominal size

P1300 Pyrolux vision panel 10" x 51" nominal size

### Design Option

Add 'PC' to the end of the code to specify a powder coated finish to the fascia.

#### Anti-ligature Disclaimer

Anti-ligature Disclaimer The anti-ligature design characteristics of this product are not intended to replace or substitute the need for necessary supervision of those who may be at risk, or for other necessary protective measures to be taken in the specific circumstances of usage. Kingsway Group, Inc. does not offer any products for sale as being 'ligature-free' and will not be liable for any claims arising from ligature attachment on its products. It is the customer's responsibility to ensure that products purchased and installed are suitable for the environments they are installed in.

## Operation and Maintenance

### Operation

To allow vision through the panel the thumb turn or staff control is used to align the central pane so that the clear stripes line up. Where a hold open control is used the panel can be left in the open position.

### Maintenance

Periodic checks should be made to the screws to ensure they are all tight and that they have not been tampered with. The control should be checked to ensure it is functioning smoothly and that the set screws that holds the thumb turn on is tight.

### Cleaning

Cleaning of vision panels should be done with caution as they should not come in contact with liquids of any kind. Where cleaning is required it should be made with a damp cloth and a mild detergent if needed.

## Guarantee

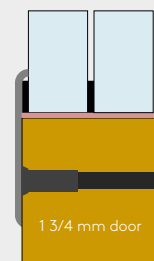
### 5 Year Guarantee\*

\*For faulty manufacture and not for damage

### Specification

Typical description would read:

P8020 Pyrolux vision panel 5" x 29" nominal size



Trident 3/4" Glass  
1/10" Intumescent  
spacers  
1/10" Intumescent  
liner  
Bolt fixed stainless  
steel fascia  
10 x 4/10" stainless steel  
dividing spacer with  
intumescent