

## Visilux Platinum Vision Panel 405 x 405mm



### Page 1 of 2

Combining traditional features with the latest technology, suitable for all environments. Manufactured using switchable glass technology, instantly switching from opaque to clear, makes it the most effective and quiet vision panel solution.

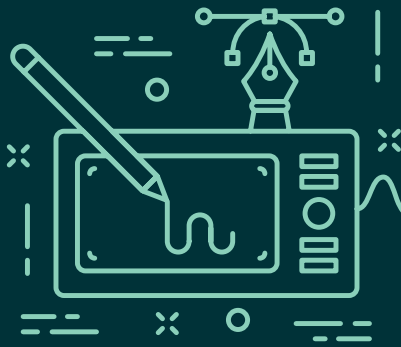
### Installation description

Prior to installation ensure that you have a power supply to the door. This will enter the door leaf either via a power transfer device or a modified hinge.

- Mark out area on the door to be cut out, relevant to your panel size, allow for additional space for wires.
- Cut out marked area, making sure not to split the face of the door.
- Fit one of the timber bead sets to the door with pins or screws.
- Mark and cut out for the control box. This controls the panel from either side of the door, use a height that is suitable for all users.
- Drill a hole through the door for the power to come in to the switch box aperture. Power is generally brought in via a hollow pivot or a concealed transfer device in the side of the door.
- Drill another hole from the vision panel aperture to the switch box aperture.
- Line the vision panel aperture with intumescent liner and place the vision panel in the aperture, making sure the switch wiring has been fed through the hole to the switch box.
- Fix the other timber bead set.
- Line switch box aperture with intumescent and place the stainless steel switch box liner in position. making sure the wiring from the panel and from the door are both inside.
- Wire the switches together and fix face plates.
- Connect wire from the door to a 55v AC supply and your panel will be functional.

#### Anti-ligature Disclaimer

Anti-ligature Disclaimer The anti-ligature design characteristics of this product are not intended to replace or substitute the need for necessary supervision of those who may be at risk, or for other necessary protective measures to be taken in the specific circumstances of usage. Kingsway Group, Inc. does not offer any products for sale as being 'ligature-free' and will not be liable for any claims arising from ligature attachment on its products. It is the customer's responsibility to ensure that products purchased and installed are suitable for the environments they are installed in.



Product datasheet

Kingsway  
Group

## Visilux Platinum Vision Panel 405 x 405mm

### Variations

The Visilux Platinum vision panel is available in the following formats:

- VP4401 Visilux Platinum vision panel 405 x 405mm with key & push button control
- VP4402 Visilux Platinum vision panel 405 x 405mm with key control to both sides
- VP4403 Visilux Platinum vision panel 405 x 405mm with push button to both sides
- VP4404 Visilux Platinum vision panel 405 x 405mm with key only control
- VP4404 Visilux Platinum vision panel 405 x 405mm with push button only control
- VPTP Visilux Platinum vision panel transformer & wiring pack
- VEB444 Visilux Easy Bead set for 44mm door, 405 x 405mm
- VEB454 Visilux Easy Bead set for 54mm door, 405 x 405mm

#### Anti-ligature Disclaimer

Anti-ligature Disclaimer The anti-ligature design characteristics of this product are not intended to replace or substitute the need for necessary supervision of those who may be at risk, or for other necessary protective measures to be taken in the specific circumstances of usage. Kingsway Group, Inc. does not offer any products for sale as being 'ligature-free' and will not be liable for any claims arising from ligature attachment on its products. It is the customer's responsibility to ensure that products purchased and installed are suitable for the environments they are installed in.

Page 2 of 2

## Operation and Maintenance

### Operation

To allow vision through the panel the staff key or patient push control is used. This is wired on a 2-way circuit where either control can override the other. Depending on specification the panel may not have a control both sides, in which case the control either makes the panel clear or opaque. The function of both is maintained (ie, when it is switched to opaque it stays opaque until switched to clear).

### Maintenance

Periodic checks should be made to the fixings to ensure they are all tight and that they have not been tampered with. Controls should be checked that they have not been tampered with and that they are still functioning correctly.

### Cleaning

Cleaning of Visilux panels should be done with caution as they should not come in contact with liquids of any kind. Where cleaning is required it should be made with a damp cloth and a mild detergent if needed.

## Fire ratings

44mm panels are suitable for FD30 doors.  
54mm panels are suitable for FD60 doors.

## Guarantee

### 5 Year Guarantee\*

\*For faulty manufacture and not for damage.

## NBS Specification

### Typical description would read:

Typical description would read: Visilux Platinum VP4401 Vision Panel with key only control.