

SENTRY Full-Door Edge Ligature Alarm System



Product datasheet



Full height sensor to door edge



Recessed KG75 electro handle for patient to release door from the inside



The SENTRY full-door edge ligature alarm system takes patient safety to a new level. The SENTRY door has pressure sensors to all three exposed edges of the door which in the event of a ligature being trapped against them will trigger the staff alarm.

The important feature that makes SENTRY unique is that the system will work whatever position the door is in - open or closed.

The SENTRY door uses the latest in high secure locking to provide a top mounted lock that then eliminates the ligature risk of a protruding lock bolt or latch on the door edge.

Technical Specs

Door Sensor Product Codes:

KG540.T SENTRY door top sensor
KG540.E SENTRY door edge sensor
KG540.B SENTRY door bottom sensor

Door Lock Code:

KG243 Top mounted high secure electro lock

Available Leaf Thickness:

44mm and 54mm

Available Facings:

Classic Veneer, Classic Laminate or Signature Laminate (see Finishes Swatch Book).

Core Structure:

Solid timber core of 3 layer hardwood

Maximum Leaf Dimensions:

1000mm (W) x 2100mm (H)

Vision Panel Options:

Duralux, Visilux or Pyrolux ranges

Fire Rating:

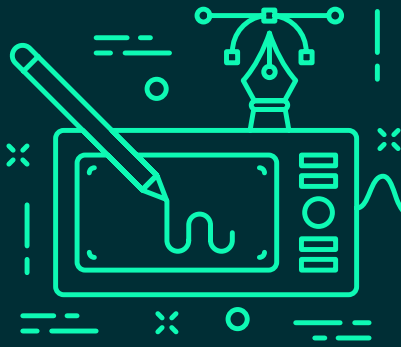
FD30S

Product Code:

SEN01 (44mm single door leaf)
SEN02 (54mm single door leaf)



Doorset Solutions
Certified by BMTRADA



KG500_KG520_KG530 Door Ligature Monitor (DLM) Testing

Regular/periodic checks should be made to the DLM as follows:

Daily: Apply pressure along 3 points of door top, side and underside monitor and confirm indicator LED signals on.

Weekly: Apply pressure along door monitor and hold for 6 seconds and confirm alarm system activated.



DLM in normal state - no pressure being applied



DLM in activation state with pressure applied - LED indicator on.

NB: DLM's fitted without the LED indicators will need testing in the same way but continued through to triggering of the sta° attack/notification system.

Operation and Maintenance

Operation

Use door as normal with DLM installed.

Maintenance

Care should be taken to ensure that the DLM remains functional and free from signs of damage. Regular status checks are advised to ensure DLM remains connected with sta° attack/notification system.

Cleaning

Use only a damp cloth to clean the DLM, where necessary a mild detergent can be used.

Inspection & maintenance.

All doors should be inspected regularly for damage that prevents the door performing in the event of a fire or an emergency situation, such as a barricade scenario. The following has been drawn up as a guide:

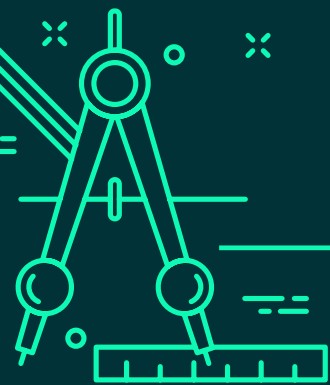
Area	Type of check	Frequency
Door Leaf	Free from damage	6 monthly
	Consistent gap between the door and frame as specified	6 monthly
Door Frame	Free from damage	6 monthly
Fire & Smoke Seals	All present and free from damage	3 monthly
Latch or Lock	Engages securely within the keep when closed	1 monthly
	Operates without undue friction	1 monthly
	Free from damage and all fixings are present and secure	1 monthly
Hinges	Functioning correctly without undue friction	Weekly
	Free from damage and all fixings are present and secure	Weekly
Anti-Barricade items	Swing Stops are functioning correctly without friction or damage and all fixings are present and secure	Weekly
	Switch hinges are operating correctly without friction or damage and all fixings are present and secure	Weekly
	Door opens in both directions without binding on the floor	Weekly
Vision Panels	Functioning vision panels operate smoothly	Weekly
	Free from damage and all fixings are present and secure	Weekly
Other hardware	Free from damage, functioning correctly and all fixings are present and secure	1 monthly
	Door locks and unlocks correctly without hinderance	Weekly
	Door closers are continuing to function correctly and close the door	Weekly
	Electrical products working correctly	Weekly
Architrave	Free from damage	6 monthly
	Fitted correctly without gaps	6 monthly

Have a technical issue, or a query? Call +44 (0)1322 610 470



SENTRY anti-barricade doorset operation

Operating instructions



Kingsway
Group

Step 1

SENTRY anti-barricade doorset operation Operating instructions



Staff approach a barricade door at the hinge side - the safe green zone, and observe the patient's room through the vision panel.

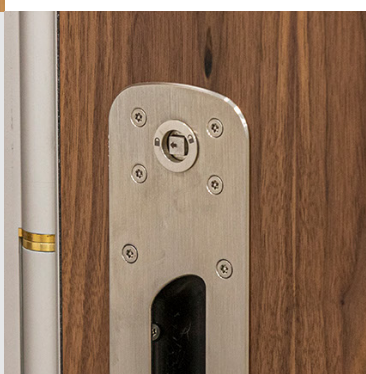
Step 2

SENTRY anti-barricade doorset operation Operating instructions



Staff unlock the SENTRY hinge mechanism, while standing in the safe green zone.

If the door set incorporates an access control locking system - staff must unlock the electronic lock using the access control wall reader (with programmed delay). Staff then unlock the Switch hinge mechanism while standing in the safe green zone.

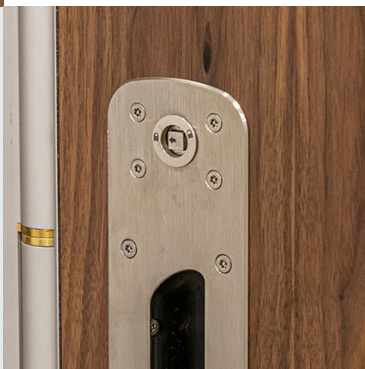
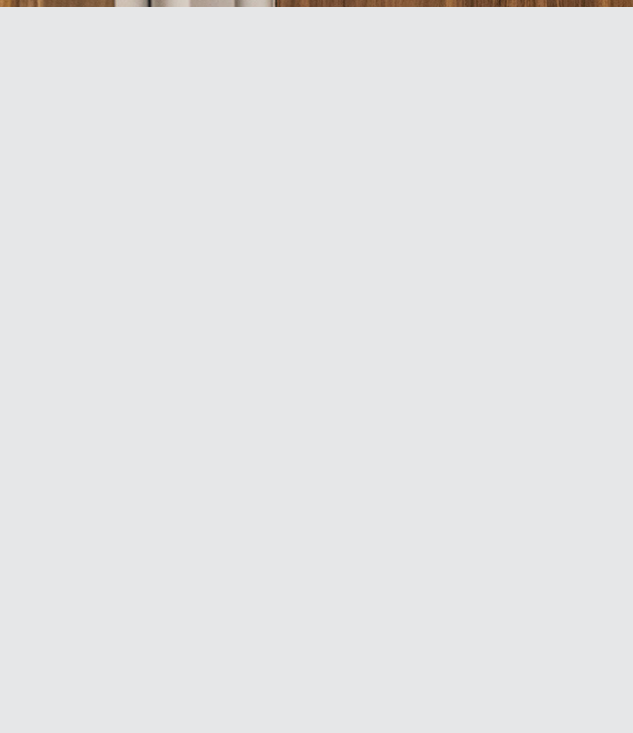


Step 3

SENTRY anti-barricade doorset operation Operating instructions



SENTRY lock mechanism and indicator shows a locked or unlocked state.



Step 4

SENTRY anti-barricade doorset operation Operating instructions



Staff pull the door outwards using the handle provided, enabling the SENTRY mechanism to retract, allowing the door to open.

Step 5

SENTRY anti-barricade doorset operation Operating instructions



The door safely opens outwards with staff stood in the safe green zone where the opening speed of the door is at it's slowest – the door provides a safe barrier between staff and the patient.

Step **6**

SENTRY anti-barricade doorset operation Operating instructions



If the door set incorporates a mechanical locking system, the door opens outward even with lock bolt extended – meaning no need for time consuming and complicated override tool kits.

