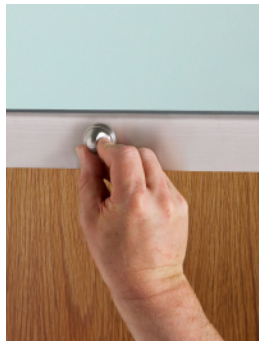


## Duralux Platinum Vision Panel 800 x 250mm



Picture Panel & Wrapped Fascia

### Anti-ligature Disclaimer

Anti-ligature Disclaimer The anti-ligature design characteristics of this product are not intended to replace or substitute the need for necessary supervision of those who may be at risk, or for other necessary protective measures to be taken in the specific circumstances of usage. Kingsway Group, Inc. does not offer any products for sale as being 'ligature-free' and will not be liable for any claims arising from ligature attachment on its products. It is the customer's responsibility to ensure that products purchased and installed are suitable for the environments they are installed in.

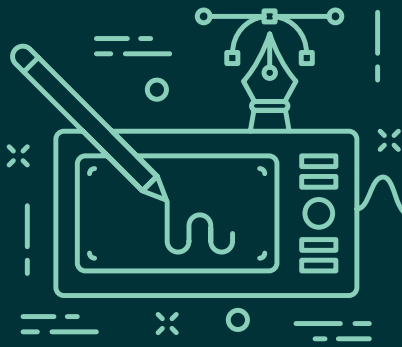
### Page 1 of 2

Duralux Platinum Vision Panels combine the strength and design features of the original model but also include electronic switchable glass. By simply turning the key or pushing the patient control, the whole panel instantly clears allowing total vision.

### Installation description

Prior to installation you will have to ensure that you have a power supply coming to the door. This will enter the door leaf either via a power transfer device or a modified hinge.

- Using the template, mark out the cut-out area on the door including the 12 bolt holes. Allow extra area on the bottom cut out for the additional switchgear.
- Cut out the marked area and drill the 12 holes.
- Drill a hole through the door to allow the power cable to be brought up where the bottom block fits.
- Line the aperture with the intumescent liner and place the vision panel carefully in the aperture making sure the switch wiring has enough room to move.
- Connect the power to the connector block that the switches are wired to and test for correct operation.
- Take the fascia with the studs protruding (patient side fascia) and position it on the door and connect the push switch by screwing the back section to the front push button part.
- With the patient side fascia held in place on the door (tape is useful for this) position the other fascia on the door, ensuring all the holes line up. Once this has been done, connect the back part of the switch to the part that is fixed in the fascia and start to connect the fascia to the door, ensuring all wiring is tucked inside the cut-out area.
- Once the front fascia is in place test both switches then fully tighten all bolts taking care not to over tighten them.



# Duralux Platinum Vision Panel 800 x 250mm

## Variations

The Duralux Platinum vision panel is available in the following formats:

- DP8400 Duralux Platinum vision panel 800 x 250mm for a 44mm door with key and push button control
- DP8401 Duralux Platinum vision panel 800 x 250mm for a 44mm door with key control to both sides
- DP8402 Duralux Platinum vision panel 800 x 250mm for a 44mm door with push button to both sides
- DP8403 Duralux Platinum vision panel 800 x 250mm for a 44mm door with key only control
- DP8404 Duralux Platinum vision panel 800 x 250mm for a 44mm door with push button only control
- DP8500 Duralux Platinum vision panel 800 x 250mm for a 54mm door with key and push button control
- DP8501 Duralux Platinum vision panel 405 x 405mm for a 54mm door with key control to both sides
- DP8502 Duralux Platinum vision panel 800 x 250mm for a 54mm door with push button control to both sides
- DP8503 Duralux Platinum vision panel 800 x 250mm for a 54mm door with key only control
- DP8504 Duralux Platinum vision panel 800 x 250mm for a 54mm door with push button only control
- DPTP Duralux Platinum vision panel transformer & wiring pack

## Design Options

Ultra 20mm stripe – add 'U' to the end of the product code  
Soft Close add 'SC' to the end of the code  
Security 150 micron film both sides add 'F' to the end of the code  
Wrapped fascia, wood effect add 'W' to the code, for powder coated add 'PC'

### Anti-ligature Disclaimer

Anti-ligature Disclaimer The anti-ligature design characteristics of this product are not intended to replace or substitute the need for necessary supervision of those who may be at risk, or for other necessary protective measures to be taken in the specific circumstances of usage. Kingsway Group, Inc. does not offer any products for sale as being 'ligature-free' and will not be liable for any claims arising from ligature attachment on its products. It is the customer's responsibility to ensure that products purchased and installed are suitable for the environments they are installed in.

## Operation and Maintenance

### Operation

To allow vision through the panel, the staff key or patient push control is used. This is wired on a 2-way circuit where either control can override the other. Depending on specification the panel may not have a control both sides, in which case the control either makes the panel clear or opaque. The function of both is maintained (ie, when it is switched to opaque it stays opaque until switched to clear).

### Maintenance

Periodic checks should be made to the fixings to ensure they are all tight and that they have not been tampered with. Controls should be checked that they have not been tampered with and that they are still functioning correctly.

### Cleaning

Cleaning of Duralux panels should be done with caution as they should not come in contact with liquids of any kind. Where cleaning is required it should be made with a damp cloth and a mild detergent if needed.

## Fire Ratings

44mm panels are suitable for FD30 doors.  
54mm panels are suitable for FD60 doors.

## Guarantee

### Life Time Guarantee\*

\*For faulty manufacture and not for damage

## NBS Specification

Typical description would read:  
DP8400 Duralux Platinum vision panel  
800 x 250mm for a 44mm door with  
key and push button control