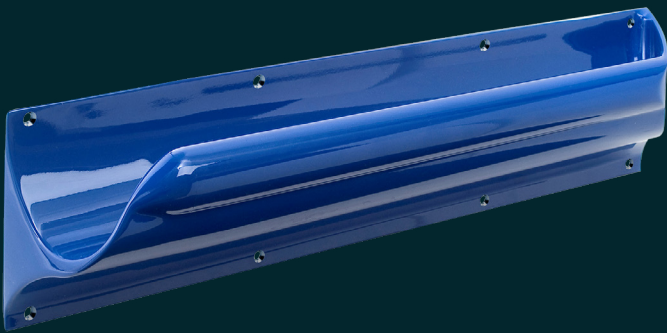


PRODUCT DATASHEET

KG250/251 Grab Rail

The WC Grab Rail is a 600mm handrail section with either a closed or open end cap. It is suitable for use either as a vertical rail beside a mirror, on the wall behind the WC, at 15° beside the WC or on the back of the door. Finished in a range of powder coating options and supplied with security fixings.



Terms and conditions:

To see our full terms and conditions, please visit:
kingswaygroupglobal.com/en-au/terms

Installation Description

- Place the Grab Rail on the wall and mark out the 10 fixing points
- Drill holes for the 10 fixing points and insert suitable plugs
- Fix the Drop Rail in place using the security screws provided

We recommend Grab Rails are sealed around all sides with anti-pick mastic.

Operation and Maintenance

Operation

To grip the handrail correctly, the fingers should curl round the bar with the thumb supporting from the outside.

Maintenance

Designed to be maintenance free having either a powder coated or anodised finish.

Cleaning

Avoid the use of caustic cleaners. Where necessary, only a light detergent should be used.

Guarantee

5 Year Guarantee*

*For faulty manufacture and not for damage

Specification

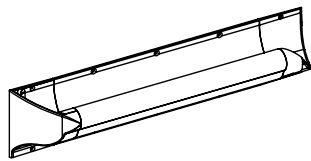
KG250 Anti-ligature DDA 600mm Left Hand Grab Rail.
KG251 Anti-ligature DDA 600mm Right Hand Grab Rail.

This product is patented as per GB2505494

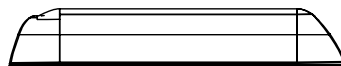
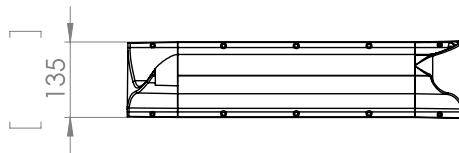
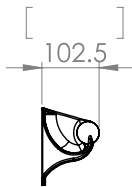
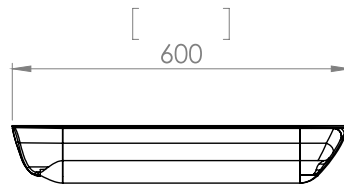
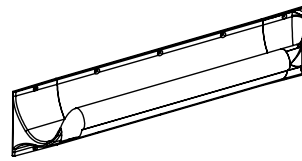
PRODUCT DIAGRAM

KG250/251 Grab Rail

KG251 Right Hand Grab Bar



KG250 Left Hand Grab Bar



Terms and conditions:

To see our full terms and conditions, please visit: kingswaygroupglobal.com/en-au/terms