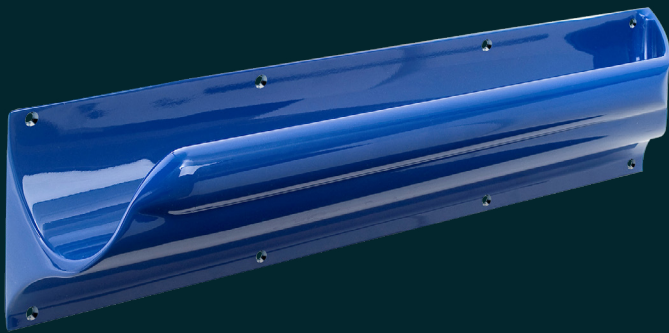


## PRODUCT DATASHEET

# KG250/251 Grab Rail

The WC Grab Rail is a 600mm handrail section with either a closed or open end cap. It is suitable for use either as a vertical rail beside a mirror, on the wall behind the WC, at 15° beside the WC or on the back of the door. Finished in a range of powder coating options and supplied with security fixings.



### Terms and conditions:

To see our full terms and conditions, please visit:  
[kingswaygroupglobal.com/en-au/terms](https://kingswaygroupglobal.com/en-au/terms)

## Installation Description

- Place the Grab Rail on the wall and mark out the 10 fixing points
- Drill holes for the 10 fixing points and insert suitable plugs
- Fix the Drop Rail in place using the security screws provided

We recommend Grab Rails are sealed around all sides with anti-pick mastic.

## Operation and Maintenance

### Operation

To grip the handrail correctly, the fingers should curl round the bar with the thumb supporting from the outside.

### Maintenance

Designed to be maintenance free having either a powder coated or anodised finish.

### Cleaning

Avoid the use of caustic cleaners. Where necessary, only a light detergent should be used.

## Warranty

### 1 Year Manufacturer's Defect Warranty\*

\*For faulty manufacture and not for damage

### Specification

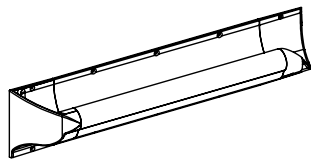
KG250 Anti-ligature DDA 600mm Left Hand Grab Rail.  
KG251 Anti-ligature DDA 600mm Right Hand Grab Rail.

This product is patented as per GB2505494

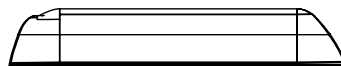
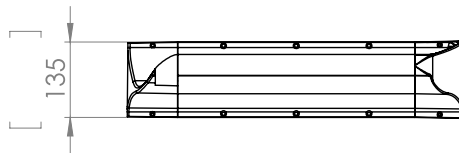
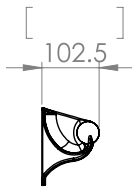
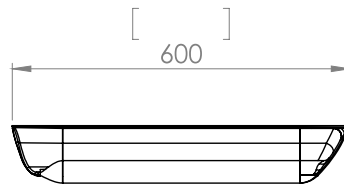
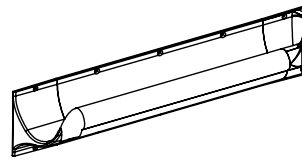
PRODUCT DIAGRAM

# KG250/251 Grab Rail

KG251 Right Hand Grab Bar



KG250 Left Hand Grab Bar



**Terms and conditions:**

To see our full terms and conditions, please visit: [kingswaygroupglobal.com/en-au/terms](https://kingswaygroupglobal.com/en-au/terms)