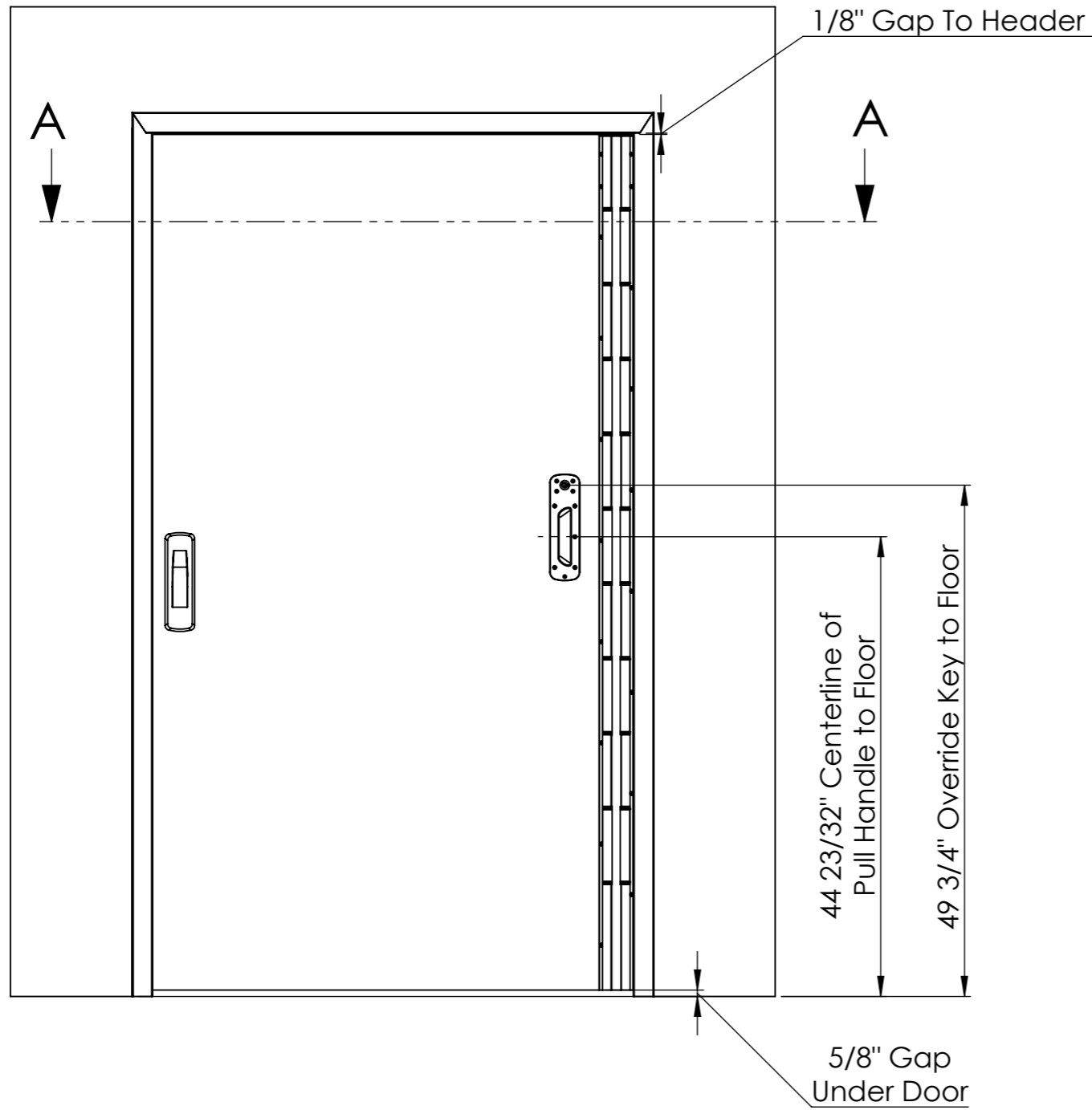


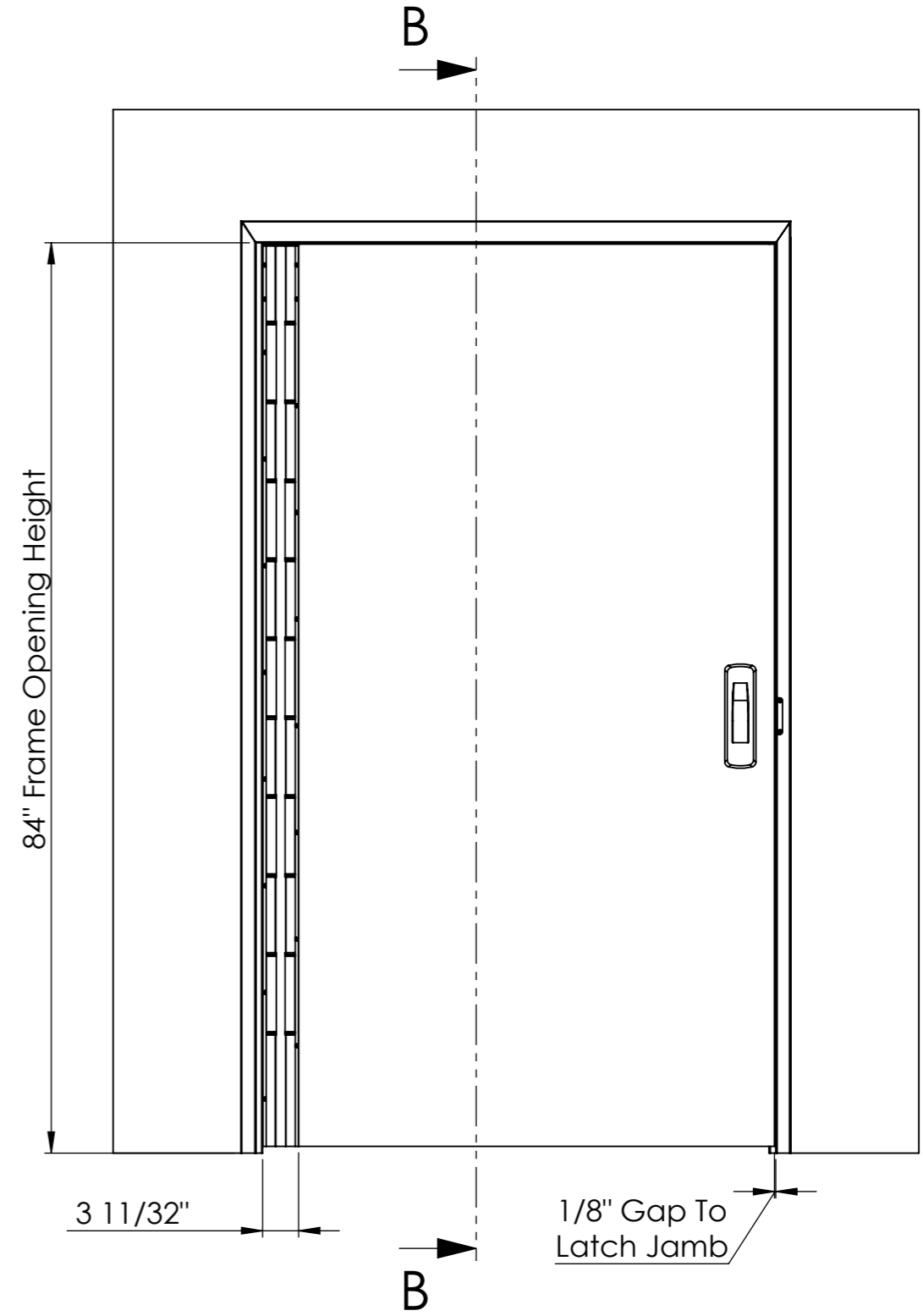
# SWITCH Door

All dimensions are in Inches unless otherwise stated

## Corridor Side



## Bedroom Side



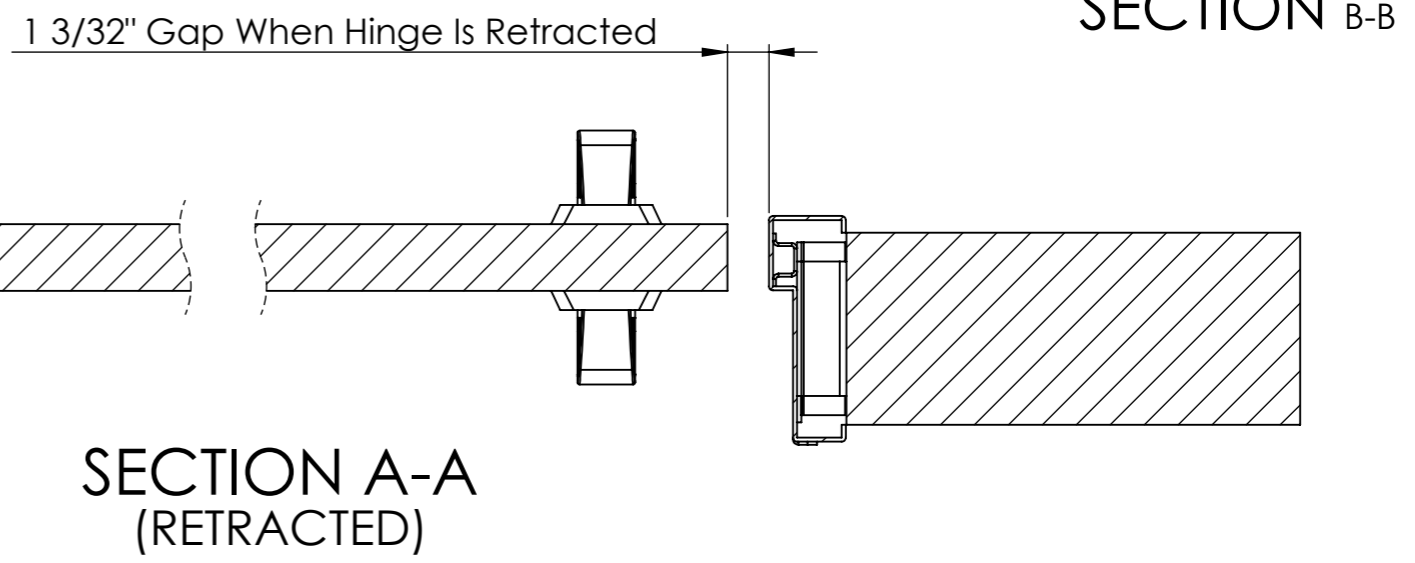
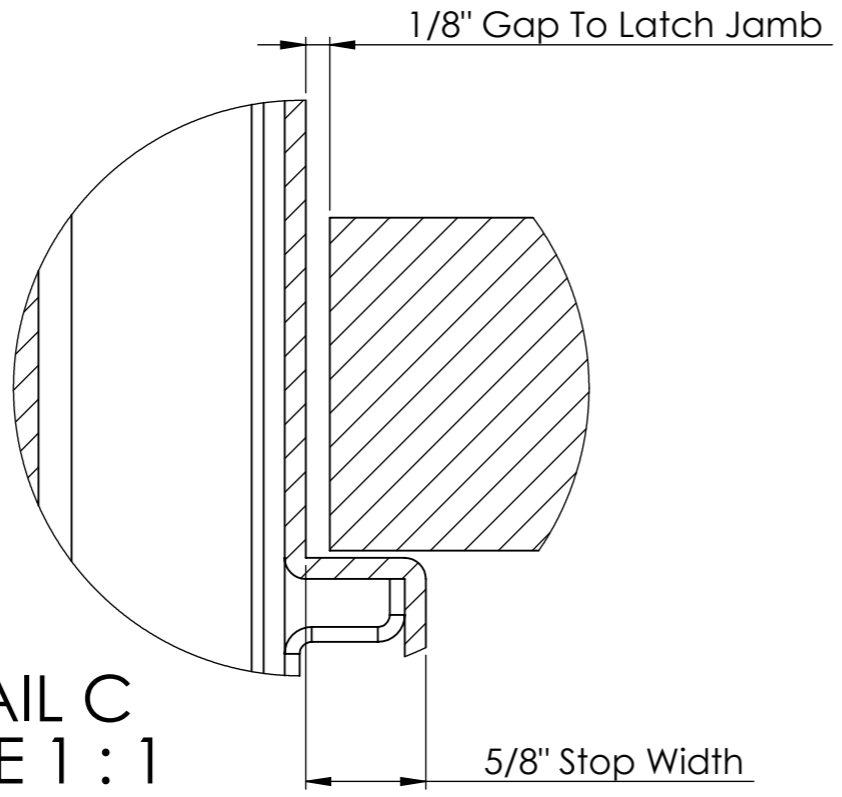
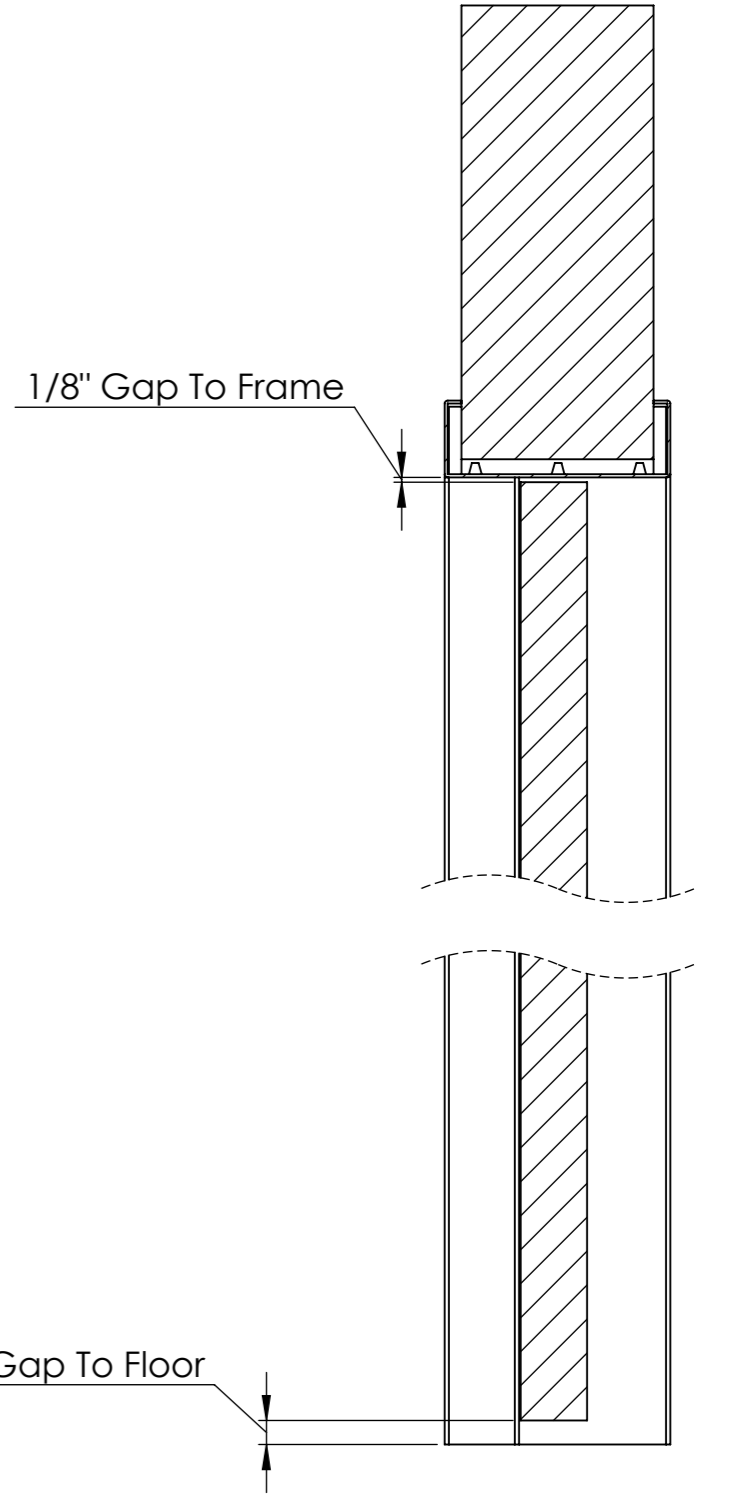
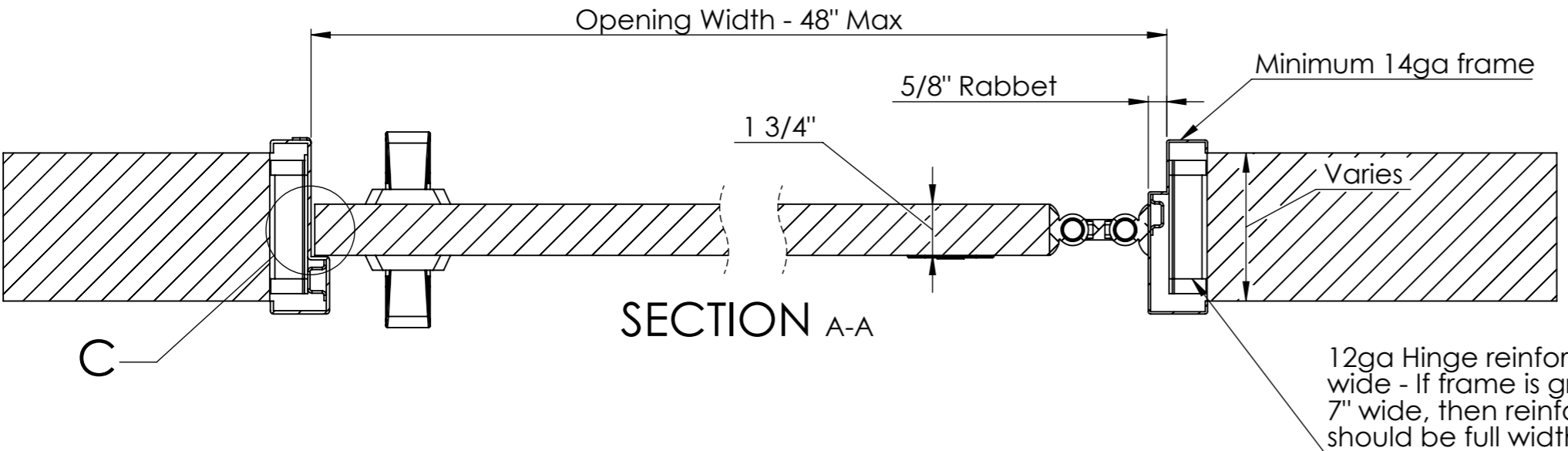
SWITCH Anti  
Barricade Doorset  
Code: SCH01 & SCH02



sales@kingswaygroupglobal.com  
www.kingswaygroupglobal.com

# SWITCH Door

All dimensions are in Inches unless otherwise stated



SWITCH Anti  
Barricade Doorset  
Code: SCH01 & SCH02

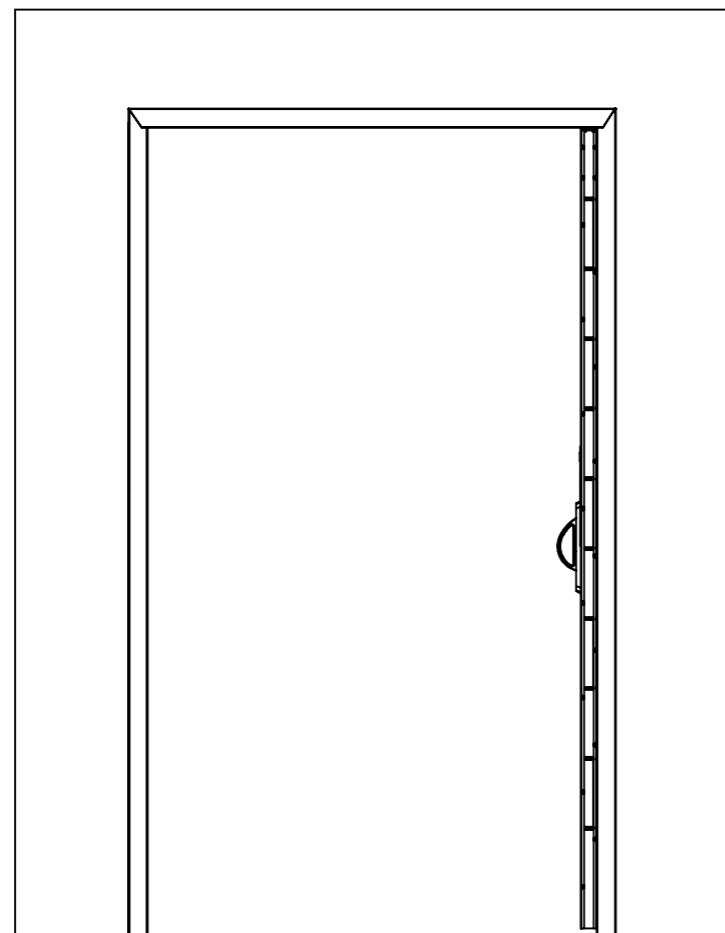
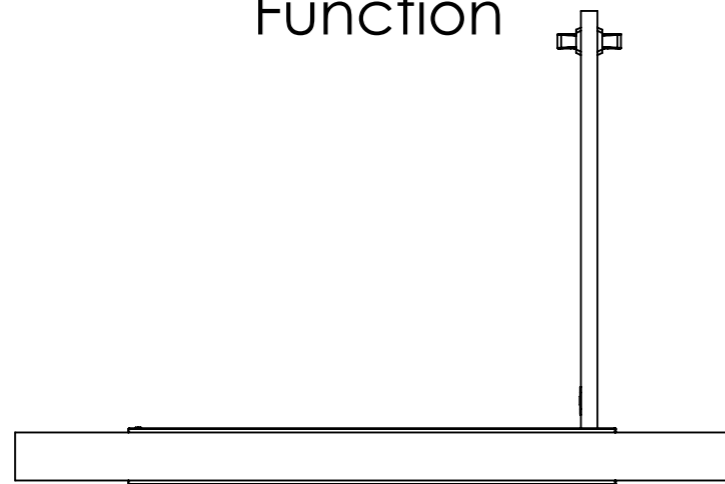


sales@kingswaygroupglobal.com  
www.kingswaygroupglobal.com

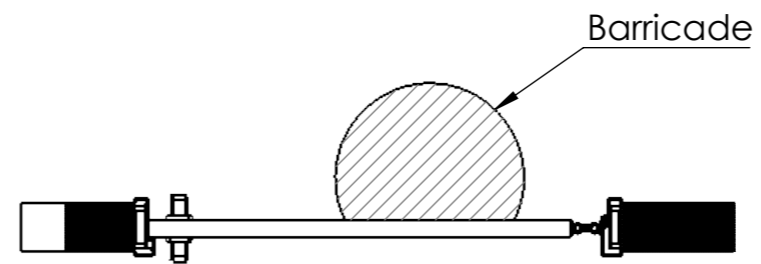
# SWITCH Door Anti-Barricade Positions

All dimensions are in Inches unless otherwise stated

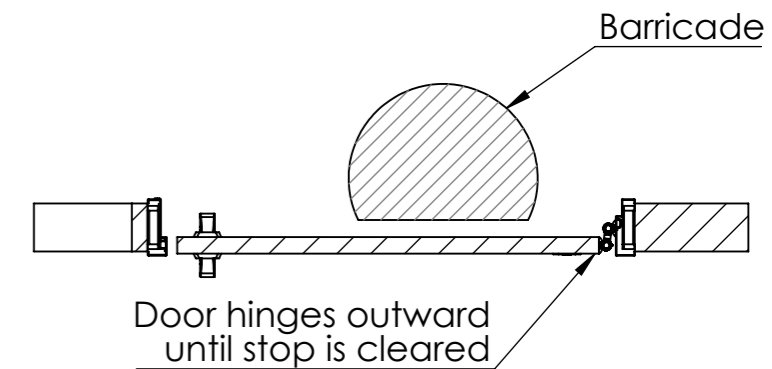
## Outward Opening Function



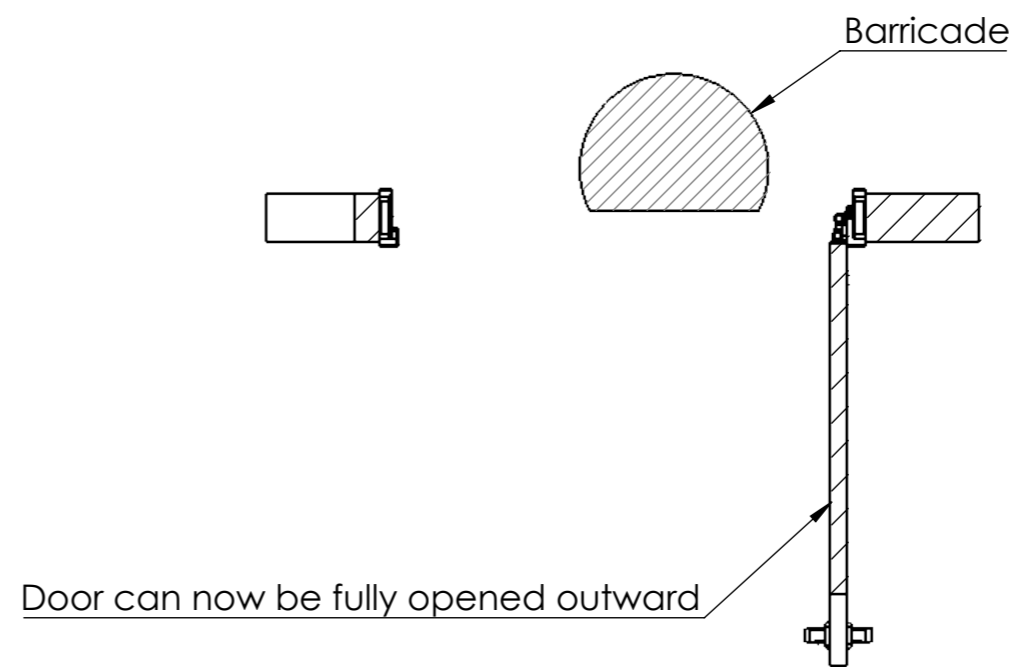
## Anti Barricade Opening Stage 1



## Anti Barricade Opening Stage 2



## Anti Barricade Opening Stage 3



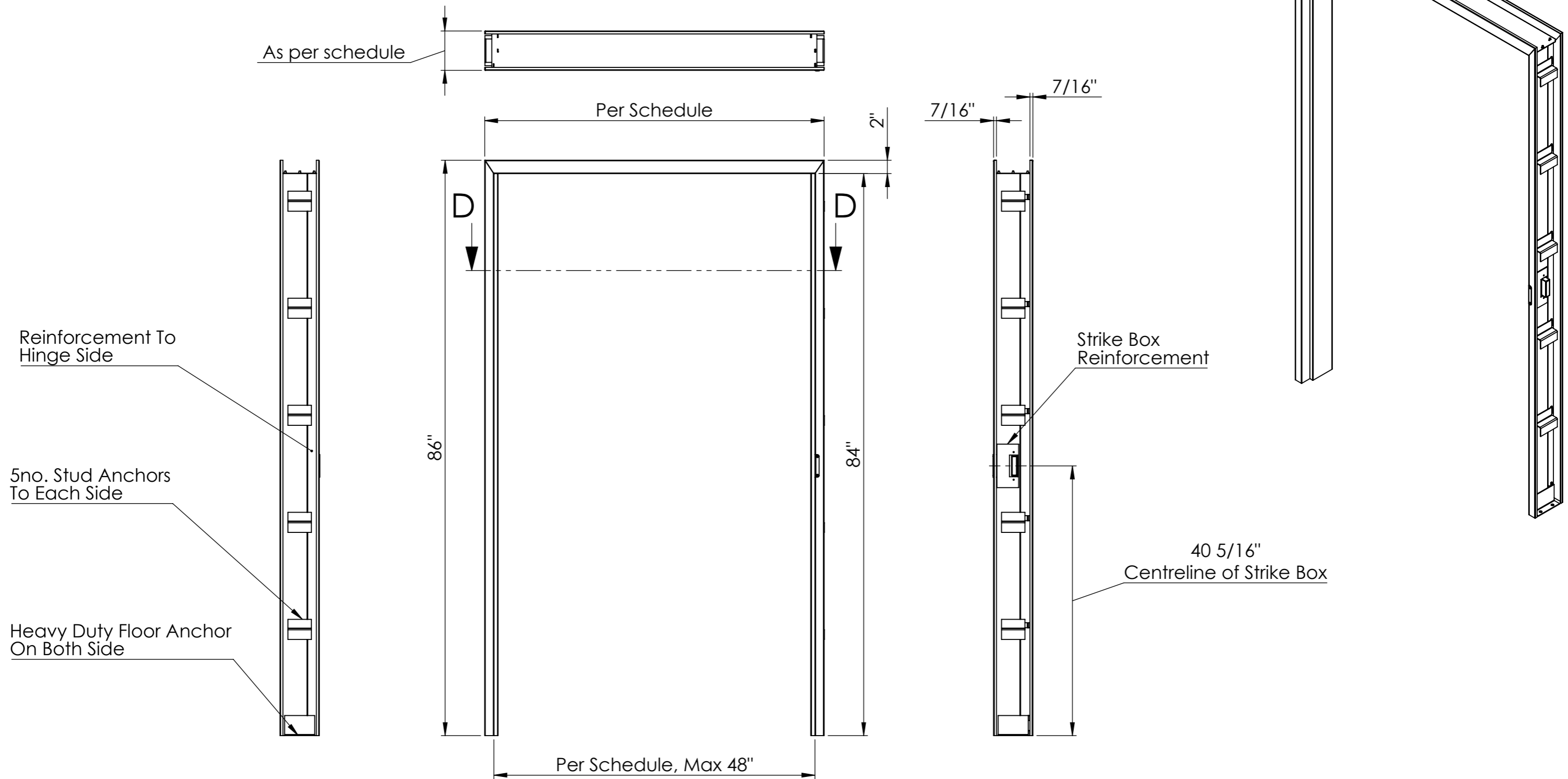
SWITCH Anti  
Barricade Doorset  
Code: SCH01 & SCH02



sales@kingswaygroupglobal.com  
www.kingswaygroupglobal.com

# SWITCH Door Anti-Barricade Frame - 11272 (RH shown)

All dimensions are in Inches unless otherwise stated



SWITCH Anti  
Barricade Doorset  
Code: SCH01 & SCH02



sales@kingswaygroupglobal.com  
www.kingswaygroupglobal.com

SECTION D-D