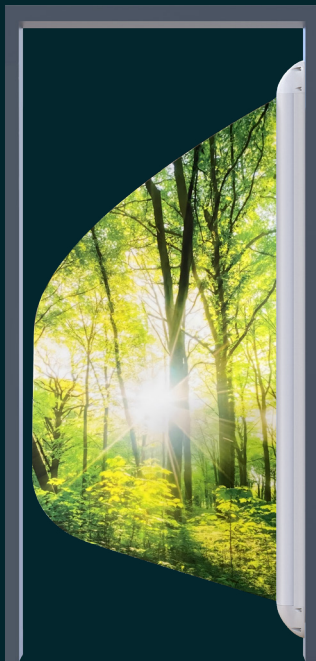


COMPLETE DOOR SYSTEM DATASHEET

# SHOWER Flex™ Door System

Kingsway's ligature-resistant SHOWER Flex™ Door System is designed to minimize the risk of loss of life in behavioral health ensuite rooms while safely maintaining patient dignity. It delivers independently verified strength and ligature resistance to de-risk the care environment while benefiting from therapeutic and compassionate design to support wellbeing and recovery.



**Terms and conditions:**

To see our full terms and conditions, please visit:  
[kingswaygroupglobal.com/en-us/terms](https://kingswaygroupglobal.com/en-us/terms)



## SHOWER Flex™ Key Features & Benefits



Preserves patient privacy in washrooms



Continuous MegaHinge with no ligature pinch points (PATENT NO. 2307102.0)



High-strength EnduraFlex ligature-resistant panel



Fully customizable leaf – choose your own images or woodgrain finishes!



Suitable for wet environments!



## Technical Specs

### Door Core:

- ½" EnduraFlex shatterproof polycarbonate

### Maximum Opening Dimensions:

- Standard/Custom: 48" (w) x 84" (h)

### Door Leaf Types Available:

- Single Leaf
- Contact us for other applications

### Frame Types Available:

- Complete Doorset with fully welded HM frame (14ga with 7ga reinforcement)
- Retrofit into existing frame

### Product Testing:

- Flammability: V1 rating to UL94 (self-extinguishing after flame removed with no flammable drip)

### Cleaning:

- Use a solution of warm water and mild dish soap
- Apply with a soft cloth or sponge
- Rinse thoroughly with clean water and dry with a soft, lint-free cloth

**Do not use ammonia, solvents, or abrasive cleaning products** as this may negatively affect the lifespan and performance of the product.

### Product Code:

- SFD01: SHOWER Flex™ double action doorset with plain door leaf and primed hollow metal frame trim
- SFD02: SHOWER Flex™ double action doorset with Printed door leaf and primed hollow metal frame trim
- SFD03: SHOWER Flex™ double action retro fit door with plain door leaf (without frame)
- SFD04: SHOWER Flex™ double action retro fit with Printed door leaf (without frame)

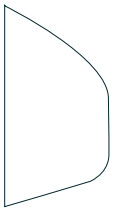


1 Year Manufacturer's Defect Warranty as per 'Kingsway Group Product Warranty' document, a copy of which is available upon request.

COMPLETE DOOR SYSTEM DATASHEET

# SHOWER Flex™ Finishes

## Standard Finishes:



White  
Plain Color



Beige  
Plain Color



Light Green  
Plain Color

## Custom Printed Finish:

Any look is possible! Contact us to discuss your custom finish in more detail.



Beach  
781459399



Aurora  
1579360606



Ice  
655427254



Yacht  
1689521152



Rainforest  
160051014



Sea  
400278007



Long Grass  
272741873



Waves  
1938868960



Autumn  
86273293



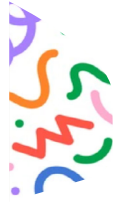
Canoe  
130714175



Abstract 1  
2287322409



Abstract 2  
2289816511



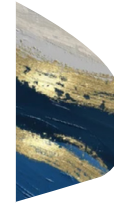
Abstract 3  
2019665456



Abstract 4  
1813398421



Abstract 5  
770551258



Abstract 6  
2154066277



Abstract 7  
1040400583



Abstract 8  
1985343128



Abstract 9  
1643345173



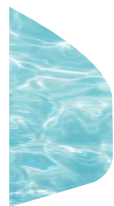
Abstract 10  
1124840219



Wood 1  
1813102735



Wood 2  
1981019453



Water  
1167541663



Sky  
1598747077



Desert  
63452116



Shells  
465640037



Stained Glass  
2209327361



Gradient  
243618616



Landmark  
295136693



Panda  
1312588349



Your Partner in Patient Safety

The best ideas start  
with a conversation

1521 E Avis Dr,  
Madison Heights, MI 48071  
United States

1-800-783-7980  
[sales@kingswaygroupusa.com](mailto:sales@kingswaygroupusa.com)

[kingswaygroupglobal.com](http://kingswaygroupglobal.com)