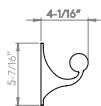
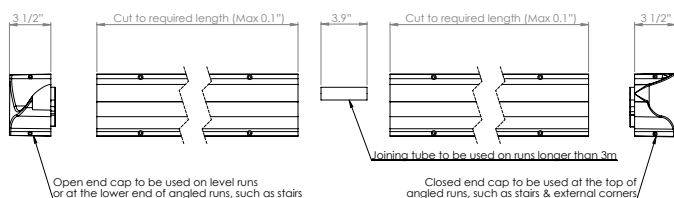
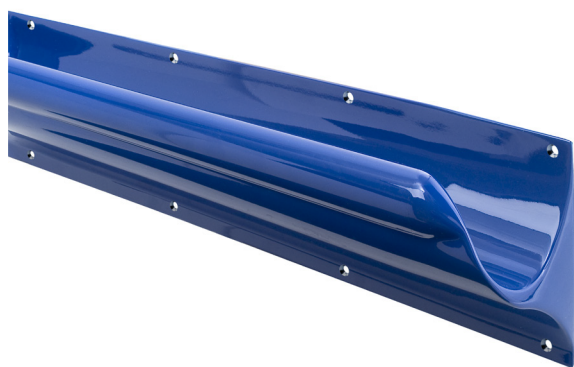


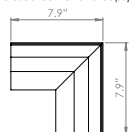
Product datasheet

Kingsway Group

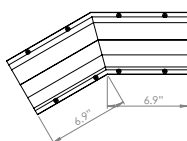
## KG260 Handrail



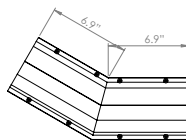
Internal 90° Corner  
(External corners to be finished with 2no closed corner end caps)



Downward Angle Joint  
(Manufactured to suit)



Upward Angle Joint  
(Manufactured to suit)



### Anti-ligature Disclaimer

Anti-ligature Disclaimer The anti-ligature design characteristics of this product are not intended to replace or substitute the need for necessary supervision of those who may be at risk, or for other necessary protective measures to be taken in the specific circumstances of usage. Kingsway Group, Inc. does not offer any products for sale as being 'ligature-free' and will not be liable for any claims arising from ligature attachment on its products. It is the customer's responsibility to ensure that products purchased and installed are suitable for the environments they are installed in.

The ultimate hand railing system for hygienic environments, high risk healthcare areas and for elderly usage. Finished with a powder coating to provide a high grade anti-ligature, wipe clean grab rail solution that is ADA compliant.

### Installation Description

- Place the hand rail on the wall and mark out the fixing points.
- Drill holes for the fixing points and insert suitable plugs.
- Fix the hand rail in place using the security screws provided.

### Operation and Maintenance

#### Operation

To grip the handrail correctly, the fingers should curl round the bar with the thumb supporting from the outside.

#### Maintenance

Designed to be maintenance free having either a powder coated or anodised finish.

#### Cleaning

Avoid the use of caustic cleaners and where necessary only a light detergent should be used.

### Guarantee

#### 3 Year Guarantee\*

\*For faulty manufacture and not for damage

#### Specification

KG260 Anti ligature handrail powder coated to RAL colour - 1m unit

KG263 Anti ligature handrail - open right end cap

KG264 Anti ligature handrail - open left end cap

KG265 Anti ligature handrail - closed right end cap

KG266 Anti ligature handrail - closed left end cap

RAL 1013 Oyster White

RAL 1015 Light ivory

RAL 1019 Gray Beige

RAL 5007 Brilliant Blue

RAL 7023 Concrete Gray

RAL 7032 Pebble Gray

RAL 7035 Light Gray

RAL 9002 Gray White

RAL 9003 Signal White

RAL 9006 White Aluminum