

PRODUCT DATASHEET

KG13 KORE Recessed Toilet Roll Holder

A recessed toilet roll holder that is secure, effective and ligature-resistant by design. The unit is manufactured from 14GA 316 grade stainless steel for maximum corrosion resistance and secured with tamper-resistant screws. Models available to suit 4" wide and 4.5" wide rolls with cores.



Terms and conditions:

To see our full terms and conditions, please visit:
kingswaygroupglobal.com/en-us/terms

Installation Description

- Mark out and remove the cutout needed for the recess of the body
- Place the unit into the cut-out and mark out the screw hole locations on the wall
- Drill holes for the provided screws and insert suitable anchors
- Secure the dispenser into the recess using the security screws provided

We recommend that you apply pick-resistant security sealant around the perimeter of the dispenser.

Operation and Maintenance

Operation

Place a toilet roll in to the opening and locate it so that it is locked in both dimples, allowing the toilet roll to rotate. Care should be taken that the correct size roll is purchased, otherwise it will result in poor performance. Models available to suit 4" wide and 4.5" wide toilet rolls with cores.

Maintenance

Periodic checks should be made to ensure the fixings are secure and that there are no signs of damage or tampering.

Cleaning

Should be cleaned as part of regular schedule using mild (non-abrasive) detergents. Avoid acidic cleaners.

Warranty

1 Year Manufacturer's Defect Warranty*

*For faulty manufacture and not for damage

Specification

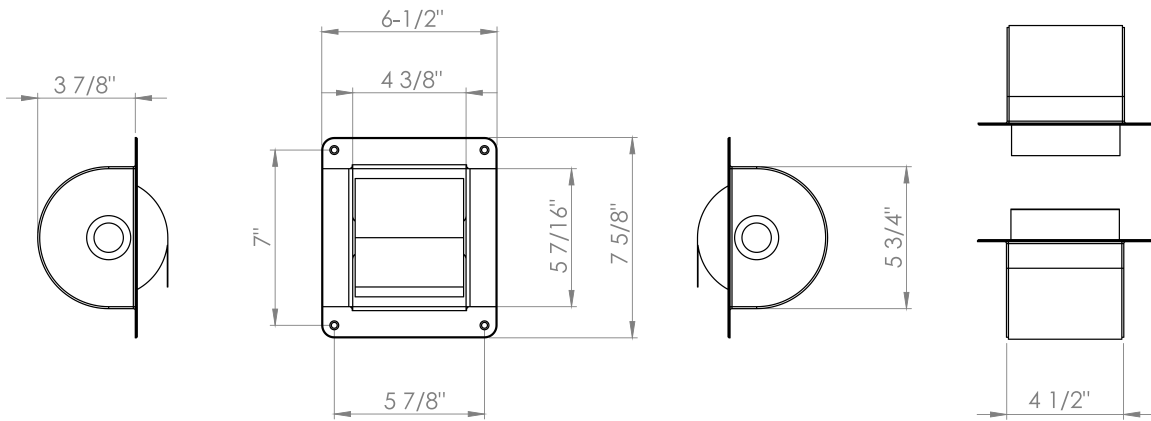
KG13.4 KORE Recessed Toilet Roll Holder - to suit 4" rolls

KG13.45 KORE Recessed Toilet Roll Holder - to suit 4.5" rolls

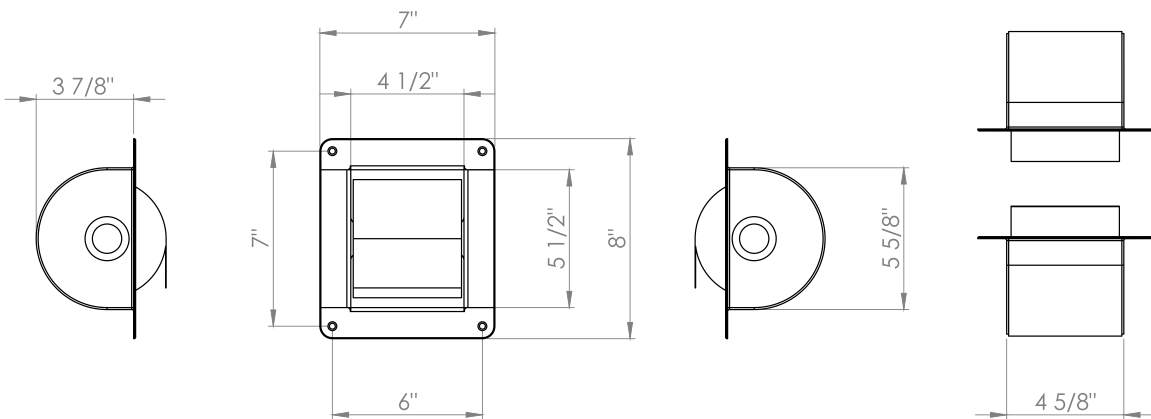
PRODUCT DIAGRAM

KG13 KORE Recessed Toilet Roll Holder

KG13.4



KG13.45



Terms and conditions:

To see our full terms and conditions, please visit: kingswaygroupglobal.com/en-us/terms