

COMPLETE DOOR SYSTEM DATASHEET

SHOWER Door System

Kingsway's anti-ligature SHOWER Door System is designed to minimise the risk of loss of life in mental healthcare ensuite rooms while safely maintaining service user dignity. It delivers independently verified strength and ligature resistance to de-risk the care environment while benefitting from therapeutic and compassionate design to support wellbeing and recovery.



Terms and conditions:

To see our full terms and conditions, please visit:
kingswaygroupglobal.com/terms



SHOWER Key Features & Benefits



Preserves service user privacy in washrooms



Continuous MegaHinge with no ligature pinch points (PATENT NO. 2307102.0)



High-strength EnduraFlex anti-ligature panel



Fully customisable leaf – choose your own images or woodgrain finishes!



Flexible fin preserves privacy and minimises ligature wedging risks at the closing edge



Suitable for wet environments!



Withstands overextension of 3kN force and static load rated to 800lb!



Ligature resistant to B4 Grade in line with DHF TS001:2013



Available via KwikShip® with a standard finish



COMPLETE DOOR SYSTEM DATASHEET

SHOWER Technical Specifications

Technical Specs

Door Core:

- 10mm EnduraFlex shatterproof polycarbonate

Maximum Leaf Dimensions:

- 900mm (w) x 1680mm (h)

Door Leaf Types Available:

- Single Leaf
- Double Leaf

Frame Types Available:

- Complete Door System with Frame
- Retrofit into existing frame

Product Testing:

- Overextension: withstands overextension of 3kN force
- Static load: rated to 800lb
- Flammability: V1 rating to UL94 (self-extinguishing after flame removed with no flammable drip)
- Ligature resistance: B4 Grade to DHF TS001:2013

Cleaning:

- Use a solution of warm water and mild dish soap
- Apply with a soft cloth or sponge
- Rinse thoroughly with clean water and dry with a soft, lint-free cloth

Do not use ammonia, solvents, or abrasive cleaning products as this may negatively affect the lifespan and performance of the product.

Product Code:

- SBD01: SHOWER doorset with plain leaf and primed hardwood frame and architraves
- SBD02: SHOWER doorset with printed leaf and primed hardwood frame and architraves
- SBD03: SHOWER retrofit door with plain leaf
- SBD04: SHOWER retrofit door with printed leaf

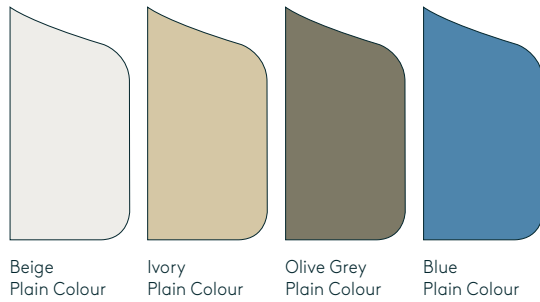


5-Year Manufacturer Defect Guarantee as per 'Kingsway Group Product Guarantee' document, a copy of which is available upon request.

COMPLETE DOOR SYSTEM DATASHEET

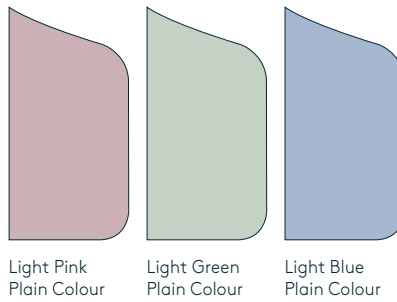
SHOWER Finishes

KwikShip® Finishes:



Beige Plain Colour Ivory Plain Colour Olive Grey Plain Colour Blue Plain Colour

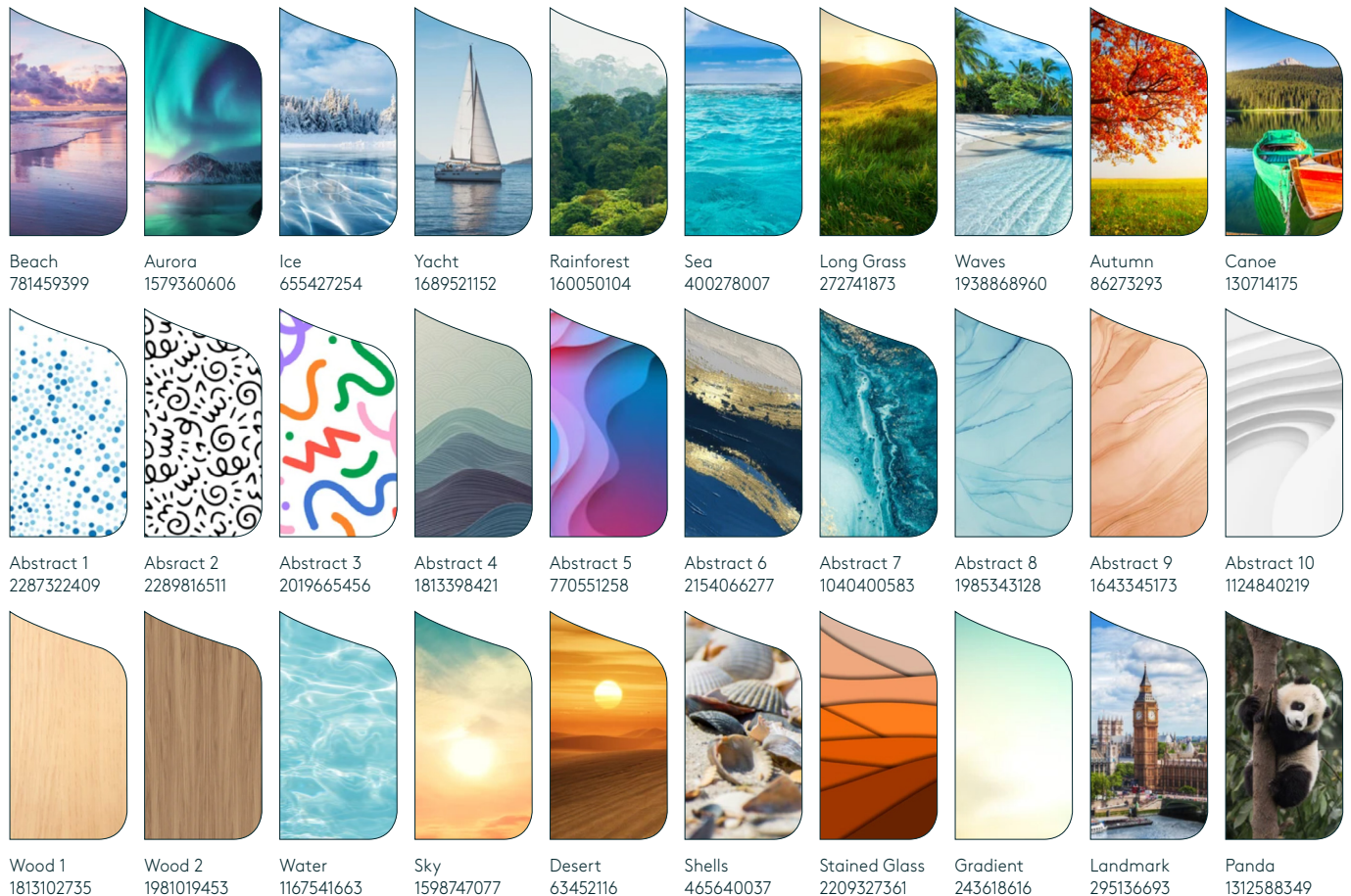
Standard Finishes:



Light Pink Plain Colour Light Green Plain Colour Light Blue Plain Colour

Custom Printed Finish:

Any look is possible! Contact us to discuss your custom finish in more detail.



Beach 781459399	Aurora 1579360606	Ice 655427254	Yacht 1689521152	Rainforest 160050104	Sea 400278007	Long Grass 272741873	Waves 1938868960	Autumn 86273293	Canoe 130714175
Abstract 1 2287322409	Abstract 2 2289816511	Abstract 3 2019665456	Abstract 4 1813398421	Abstract 5 770551258	Abstract 6 2154066277	Abstract 7 1040400583	Abstract 8 1985343128	Abstract 9 1643345173	Abstract 10 1124840219
Wood 1 1813102735	Wood 2 1981019453	Water 1167541663	Sky 1598747077	Desert 63452116	Shells 465640037	Stained Glass 2209327361	Gradient 243618616	Landmark 295136693	Panda 1312588349



Your Partner in Patient Safety

The best ideas start
with a conversation

Unit 1 Helix Logistics Park,
Edgington Way, Sidcup,
DA14 5BN

020 3890 5887
sales@kingswaygroup.co.uk

kingswaygroupglobal.com